

HNC IIoT Series Product Brochure

>>Cloud HMI&BOX&PLC

Product



HT3000-D4 Series

Model List

Model	TFT Screen	Storage	LAN+COM	USB	Voice	WiFi	Wireless	Hole Size	Dimension W*H*D
HT3000-D4	4.3" 800*480HD	4G + 512M	1+2	1	Yes			132x80mm	137x85x30mm
HT3000-D4W		4G + 512M	1+2	1	Yes	Yes			
HT3000-D4E		4G + 512M	1+2	1	Yes		Global 4G		

Features

- HD screen. Built-in quad-core high-performance processor, smoother operation, faster speed, stronger stability.
- The real color and exquisite with IPS hard screen technology. Integrated design, full-view visual experience, immersive enjoyment.
- Provide exclusive maintain identity for equipment manufacturers, as well as exclusive enterprise platforms. More convenient for equipment vendors.
- Supports remote programming, download, diagnostics, monitoring and debugging of PLC programs
- Supported voice function, access microphone and loudspeaker via USB, Supported text-to-speech, voice broadcasting, intercom function, innovative device cloud voice



Multiple security protection mechanisms

Higher safety level with A/B Key+local confirmation safety mechanism, ensure the safe and stable operation of equipments.

Support for video playing

HMI built-in quad-core high-performance processor, can play video files in the USB flash drive. Supported MP4 video format, equipped with IPS hard screen technology, so that the video picture is more delicate and much smoother, color is



Third party IoT Platform

Support access to third-party IoT platforms such as Alibaba Cloud, Amazon, Google, etc.

 **Support data interconnection and distribution**

By the Haiwell data interconnection tool, real-time data/historical data can be stored in databases such as MySQL/SQL Server, and data distribution is supported, help to generate various data reports.

 **Support Cloud maintenance for equipment manufacturers**

Provide exclusive maintain identity for equipment manufacturers, as well as exclusive enterprise platforms. More convenient for equipment vendors.

 **Web API interface**

Third-party software and platforms can easily and securely obtain device data and control devices through the built-in Web API function using HTTP protocol, support real-time data push, support PHP, Java, C#, C++ languages. Support Internet and LAN network.

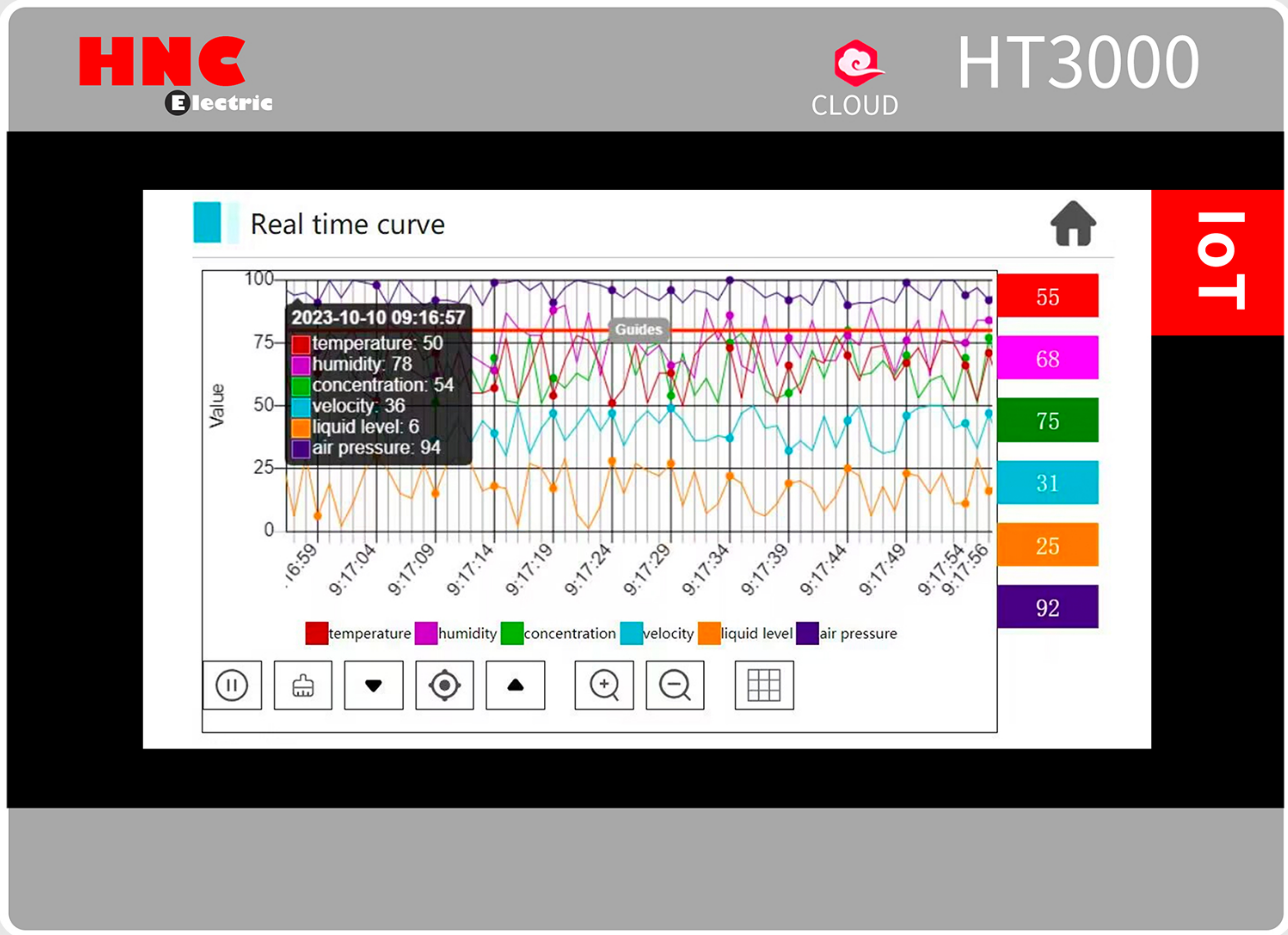
 **Support Cloud Data Center**

No need to build an MQTT server to realize data collection and reporting, and connect to ERP/MES and other systems. Through Haiwell Cloud Data Center function, you can also flexible call of equipment variable data from various places, easy to realize remote centralized control of equipments.

Specification

Specification		4.3"
Software	Programming software	HTCloud Designer
Display	Display screen	4"TFT
	Resolution	800x480pixels
	Color	16.7M
	Brightness(cd/m ²)	450Cd/m ²
	Touch Type	Resistance touch screen
Storage	Flash	4GB
	RAM	512M
Backlight	Backlight Type	LED
	Backlight Life Time	> 30000H
	Automatic Dormancy	Support and Configurable
I/O port	4G	Optional
	WIFI	Optional
	Ethernet Port	10/100 Base-T
	COM port	COM1:R232 COM2:RS485
	USB HOST	USB2.0 x 1
	Print Port	COM1:R232 COM2:RS485
Power	Input power	24±20%VDC
	Power Consumption	< 6W
	Power Protection	Surge protection
	Voltage Resistance	500VAC
	Isolation Resistance	Exceed 50MΩ @500VDC
	Vibration Endurance	10~57HZ amplitude 0.075mm, acceleration 1G, X, Y, Z 10 times in triaxial direction
Environment	Cooling Type	Natural air Cooling
	Protection Structure	IP65
	Storage Temperature	-20 ~70°C
	Operating Temperature	-10°C ~ 60°C
	Relative Humidity	10 ~ 90%RH (non-condensing)
Structure	Shell material	ABS + PC
	Shape size (WxHxD)	137x85x30mm
	Cutout size(WxH)	132x80mm
	Net weight	0.3kg

Product



HT3000-B Series

Model List

Model	TFT Screen	Storage	LAN	USB	COM	Voice	WiFi	Wireless	Hole Size	Dimension W*H*D
HT3000-B7H	7" 1024*600 HD	4GB + 512M	1	2	2	Yes			193×138mm	200×146×37mm
HT3000-B7HW	7" 1024*600 HD	4GB + 512M	1	2	2	Yes	Yes			
HT3000-B7HE	7" 1024*600 HD	4GB + 512M	1	2	2	Yes		Global 4G		
HT3000-B10	10.1" 1024*600	4GB + 512M	1	2	2	Yes			260×202mm	270×212×35mm
HT3000-B10W	10.1" 1024*600	4GB + 512M	1	2	2	Yes	Yes			
HT3000-B10E	10.1" 1024*600	4GB + 512M	1	2	2	Yes		Global 4G		

Products Features

- Full fit screen design, brighter color, wider view, much brighter brightness and more clear dissolutio.
- Adopt new generation hardware, the anti-interference is more stable, Integrated IoT gateway+DTU+HMI all in one.
- Supported voice function, access microphone and loudspeaker via USB, Supported text-to-speech,voice broadcasting,intercom function,innovative device cloud voice.
- Support MQTT protocol. Can be connected to database server/ERP/MES etc.
- Supports remote programming, download, firmware upgrade, debugging etc.
- Management by HTCloud Designer.



Web API interface

Third-party software and platforms can easily and securely obtain device data and control devices through the built-in Web API function using HTTP protocol, support real-time data push, support PHP, Java, C#, C++ languages. Support Internet and LAN network.



Configuration Screen Integration

Innovatively opened the integration function of the device configuration screen to third parties. Through a safe and easy-to-use interface, the device screen can be integrated into a variety of personalized scenarios such as third-party software, websites, APPs. Let third-party applications immediately have the remote control capabilities of the device.



Multiple security protection mechanisms

Higher safety level with A/B Key + local confirmation safety mechanism, ensure the safe and stable operation of equipments.



Integrated Cloud access & alarm notification

Remote devices can be accessed through IoTBus Cloud APP and website. Supports real-time abnormal alarm notification.



Support Cloud maintenance for equipment manufacturers

Provide exclusive maintain identity for equipment manufacturers, as well as exclusive enterprise platforms. More convenient for equipment vendors.

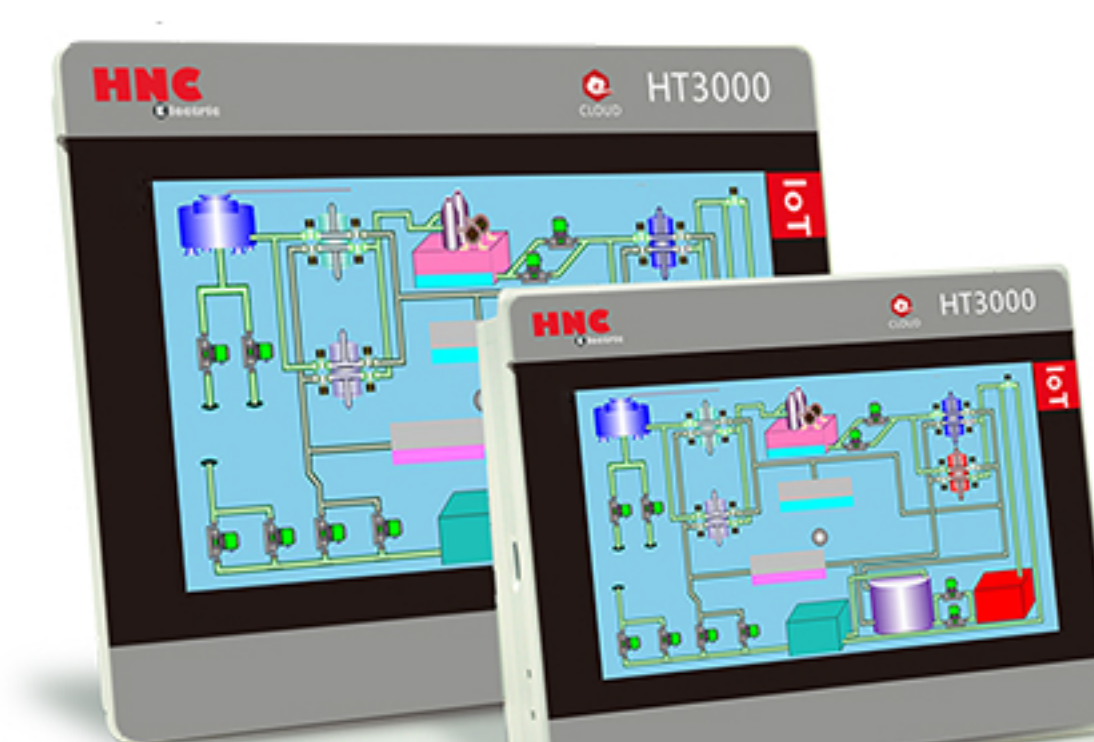


Support data interconnection and distribution

By the data interconnection tool, real-time data/historical data can be stored in databases such as MySQL/SQL Server, and data distribution is supported, help to generate various data reports.



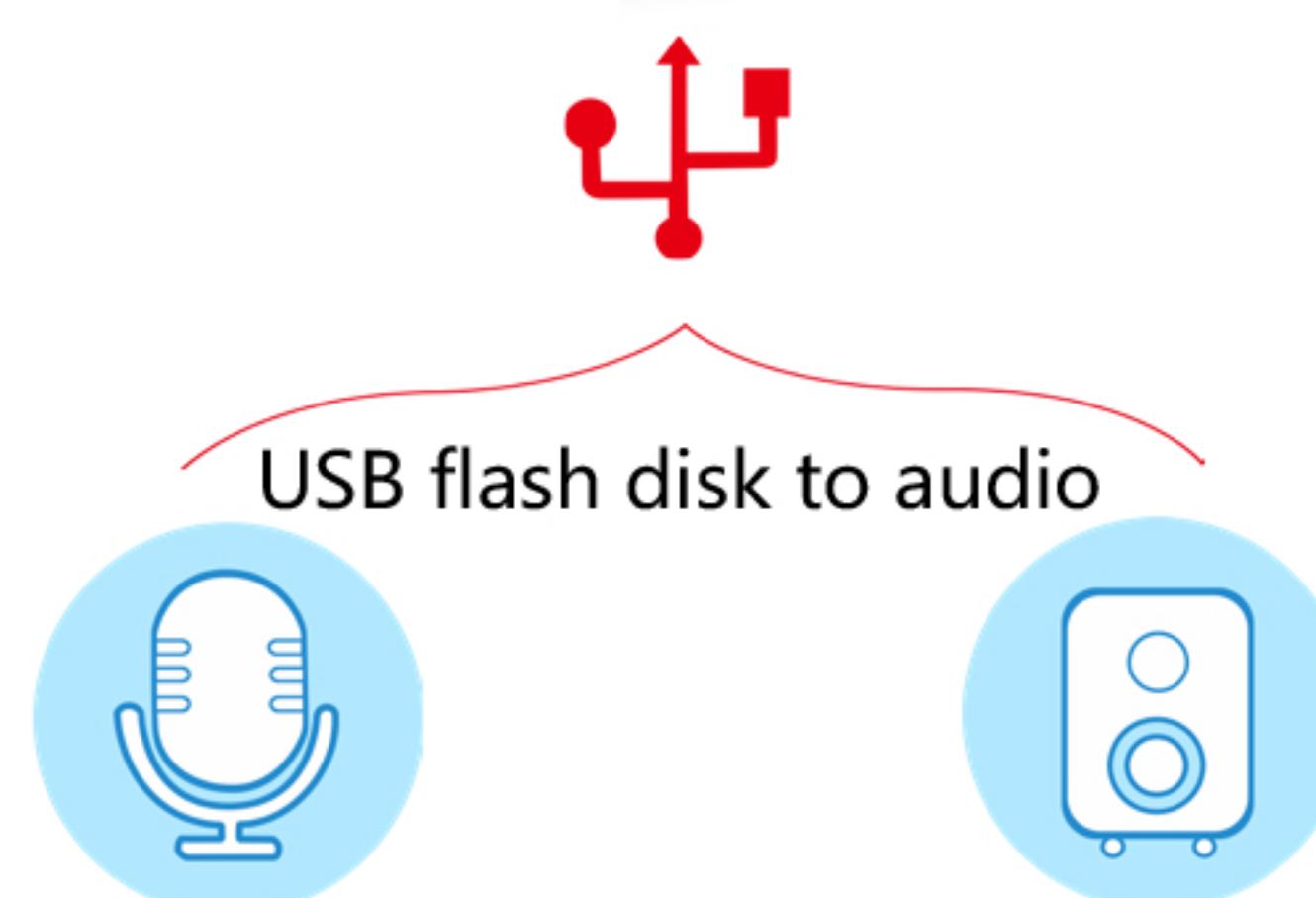
Supported text-to-speech, automatically broadcast alarm information of Chinese and English



Supported to broadcast fast batch voice notification through the device



Supported the intercom function, easily communicate by devices in groups



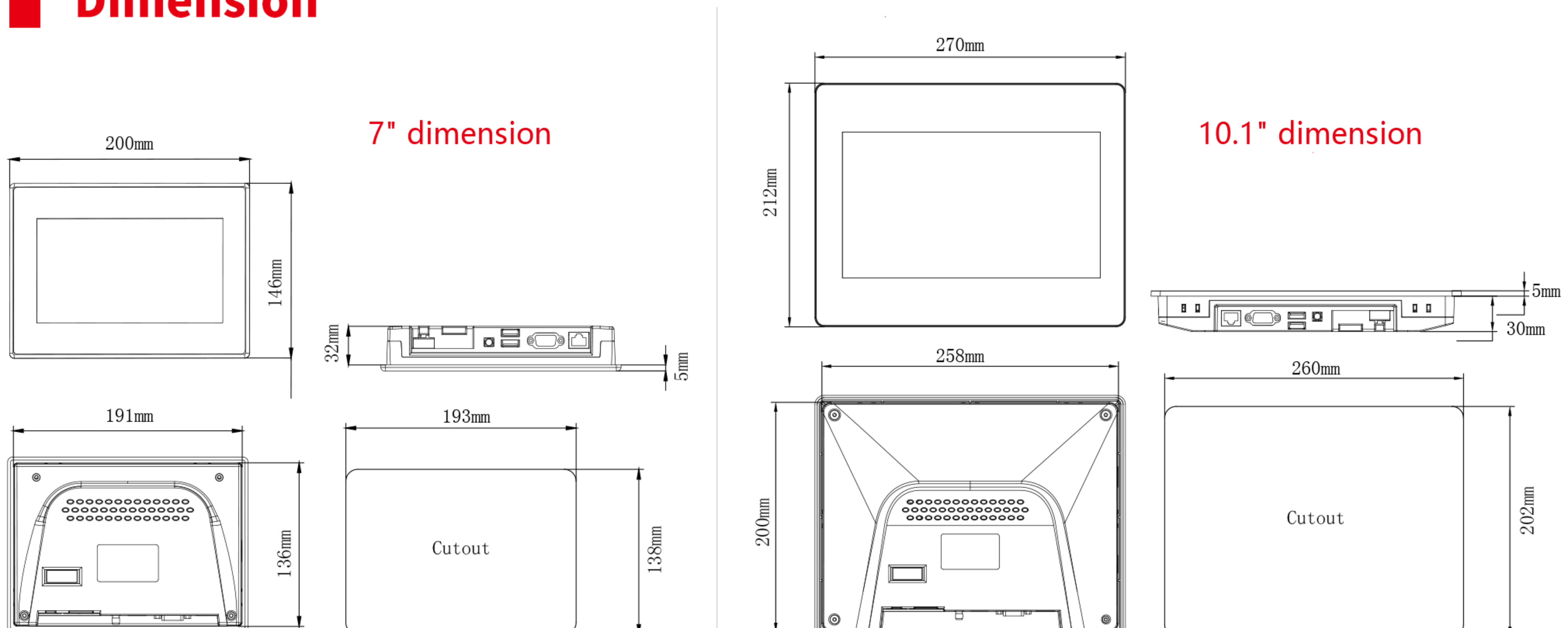
The innovative device cloud voice, support mobile phone remotely intercom and broadcast



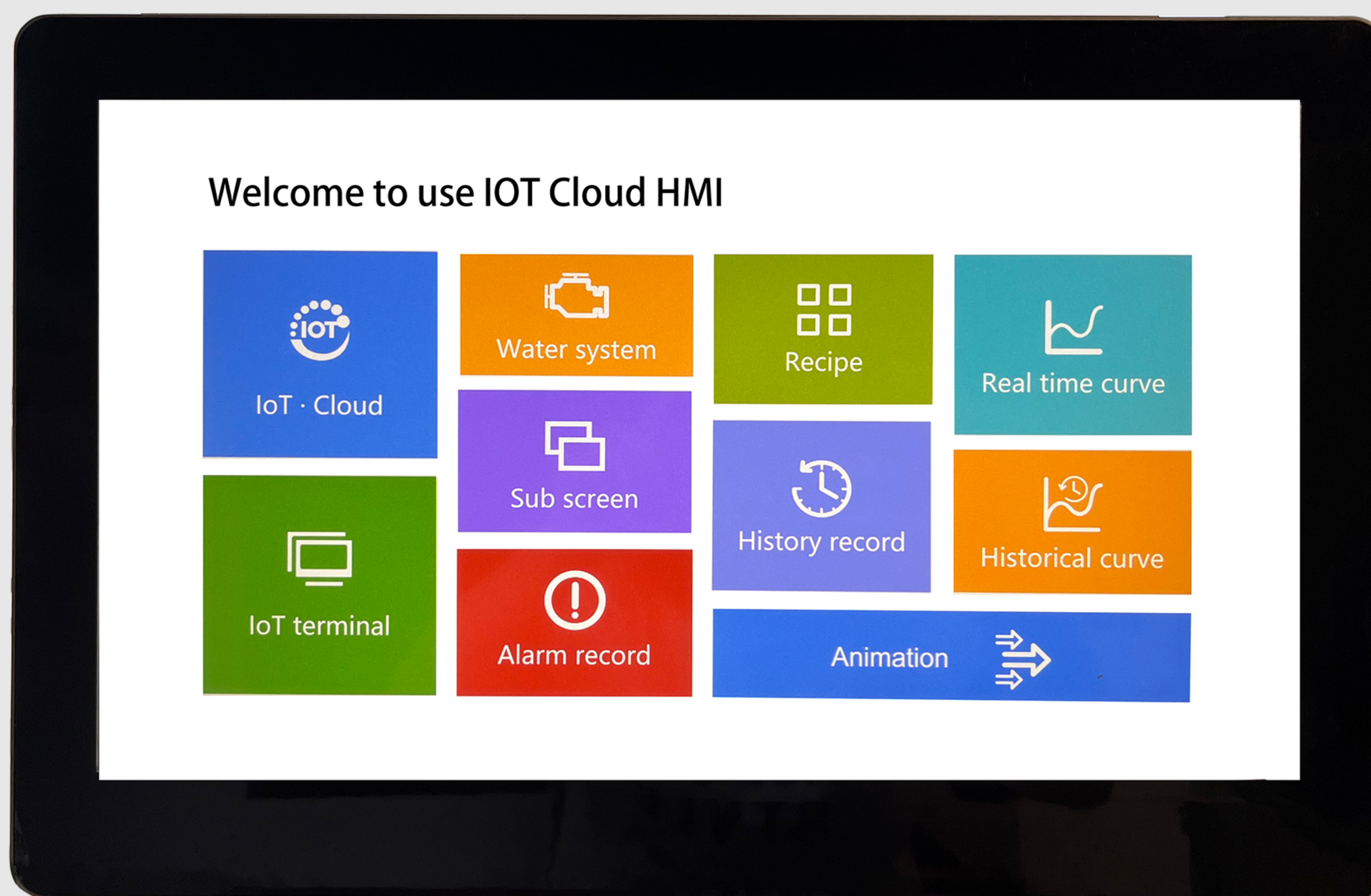
Products Specification

Specification		7"	10.1"
Software	Programming software	HTCloud Designer	
Display	Display screen	7" TFT	10.1" TFT
	Resolution	1024x600pixels	1024x600pixels
	Color	16M	16M
	Brightness(cd/m ²)	350	350
	Touch Type	Resistive Type	Resistive Type
Storage	Flash	4GB	4GB
	RAM	512M	512M
Backlight	Backlight Type	LED	LED
	Backlight Life Time	> 30000H	> 30000H
	Automatic Dormancy	Support and Configurable	Support and Configurable
I/O port	WIFI	Optional	Optional
	4G	Optional	Optional
	COM port	2 (232/485)	2 (232/485)
	Ethernet Port	10/100 Base-T	10/100 Base-T
	USB HOST	USB2.0 x 2	USB2.0 x 2
	Print Port	COM Port/USB Print	COM Port/USB Print
Power	Input power	24±20%VDC	24±20%VDC
	Power Consumption	7W	10W
	Voltage Resistance	500VAC	500VAC
	Isolation Resistance	Exceed 50MΩ @500VDC	Exceed 50MΩ @500VDC
	Vibration Endurance	10 ~ 25 Hz (X, Y, Z direction 2G/30 minutes)	10 ~ 25 Hz (X, Y, Z direction 2G/30 minutes)
Environment	Cooling Type	Natural air Cooling	Natural air Cooling
	Protection Structure	IP65	IP65
	Storage Temperature	-20 ~70°C	-20 ~70°C
	Operating Temperature	-10°C ~ 60°C	-10°C ~ 60°C
	Relative Humidity	10 ~ 90%RH (non-condensing)	10 ~ 90%RH (non-condensing)
Structure	Shell material	ABS + PC	ABS + PC
	Shape size (WxHxD)	200x146x37mm	270x212x35mm
	Cutout size(WxH)	193x138mm	260x202mm
	Net weight	0.8kg	1.3kg

Dimension



Product



HT3000-D15 Series

Model List

Model	TFT Screen	Storage	LAN+COM	USB	Local Video	Voice	WIFI	Wireless	Hole Size	Dimension W*H*D
HT3000-D15	15.6" 1920x1080	4G + 1G	1+3	2	Yes	Yes			383x245mm	394x256x41mm Aluminum alloy casing
HT3000-D15W		4G + 1G	1+3	2	Yes	Yes	Yes			
HT3000-D15E		4G + 1G	1+3	2	Yes	Yes		Global 4G		
HT3000-D15EW		4G + 1G	1+3	2	Yes	Yes	Yes	Global 4G		

Features



Supports local video monitoring

HMI can connect the camera that supports RTSP protocol transmission or cloud video channel through Ethernet to display the camera video smoothly on the screen. It can also carry out local or remote monitoring through IoTBus cloud APP.



Support for video playing

HMI built-in quad-core high-performance processor, can play video files in the USB flash drive. Supported MP4 video format, equipped with IPS hard screen technology, so that the video picture is more delicate and much smoother, color is more real.



Remote Data Interaction

Data interaction is the key to breaking down information silos. HNC IIoT HMI can help realize seamless data transmission between remote devices and flexibly realize data sharing and interaction. For a huge production or management system, real-time and effective remote data interaction is the first condition to truly realize the global optimization of production, scheduling and distribution.



Remote Access Monitoring

Anytime and anywhere, users can login and remotely access the HMI through IoTBus APP or IoTBus Cloud website, and remotely monitor the running status of devices in real time. Even if you are in a different place, you can check the production status of the factory at anytime, which is convenient for management. Greatly save the human, material and time cost of running to the site.



Remote data collection

Data gathering is essential before effective data analysis. Through HMI, we can unify the device data from all over the country and even the world for intensive management and utilization, and help enterprises realize "talking with data, making decisions with data and managing with data".



Real-time exception alarm push

When the device alarms, HMI will send alarm information in real-time through the IoTBus to realize timely response and processing of abnormal state. Accurate fault location can improve the trouble shooting efficiency.



Docking ERP/MES and other databases

IoTBus IoT Cloud HMI can easily connect to ERP/MES and other database systems, so that the front-line production management data can be synchronized with the enterprise's existing ERP/MES and other databases. Resource sharing can be realized, and comprehensive data reports across modules and systems can be easily completed to further improve the production management capability of enterprises.



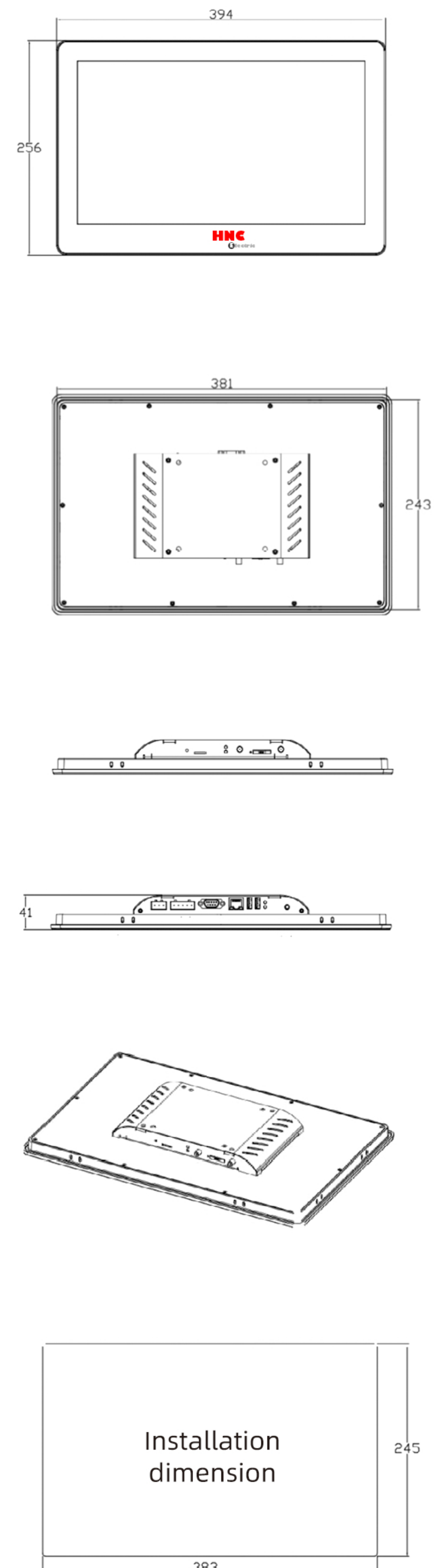
Remote Centralized Control

When multiple devices need to be maintained and managed, managing each device one by one is not only time-consuming and laborious, but also may cause artificial operation and management security risks. IoTBus IoT Cloud HMI multi-devices can support remote centralized management and control, which not only greatly improves the centralized intelligent monitoring ability of the enterprise, but also greatly reduces the operation and maintenance cost of the entire system.

Specification

Specification	Parameter	
Platform	Linux	
Software	Programming software	HTCloud Designer
Display	Touch Type	Resistance touch screen
	Display screen	15.6" TFT
	Resolution	1920x1080 pixels
	Color	2.6M
	Brightness(cd/m ²)	400Cd/m ²
Storage	FLASH	4G
	RAM	1G
Backlight	Backlight Type	LED
	Backlight Life Time	> 30000H
	Automatic Dormancy	Support and Configurable
	4G	Optional
	WIFI	Optional
I/O port	USB HOST	USB2.0×2
	COM port	COM1: RS232/RS485
		COM2: RS485
		COM3: RS232
	Ethernet Port	10/100 Base-T
	Voice	Support
Print Port	COM Port/USB Print	
Power	Input power	24±20%VDC
	Power Consumption	<15W
	Power Protection	Surge protection
	Voltage Resistance	500VAC
	Isolation Resistance	Exceed 50MΩ @500VDC
	Vibration Endurance	10 ~ 25 Hz (X, Y, Z direction 2G/30 minutes)
Environment	Cooling Type	Natural air Cooling
	Protection Structure	IP65
	Storage Temperature	-20°C ~60°C;
	Operating Temperature	0°C ~50°C
	Relative Humidity	10~90%RH (non-condensing)
Structure	Shell material	Aluminum alloy casing,Glass Panel
	Shape size (WxHxD)	394mm×256mm×41mm
	Cutout size(WxH)	383mm×245mm
	Net weight	2.6

Dimension



Product



H-BOX Series

Model List

Model	TFT Screen	LAN	USB	COM	Voice	WiFi	Wireless Network	Dimension
H-BOX	4G + 512M	2	2	2	Yes	Yes		50×120×85mm
H-BOX-E	4G + 512M	2	2	2	Yes	Yes	Global 4G	



Ethernet Interface



WiFi Network



USB Interface



Cloud function



Voice function



Edge Computing



4G Network

Product Features

- Integrated IoT gateway+DTU+HMI all in one, saving cost and space. Small box, big application.
- Supported voice function, access microphone and loudspeaker via USB, Supported text-to-speech, voice broadcasting, intercom function, innovative device cloud voice.
- Built-in Web API function, can control and obtain the device data through HTTP protocol.
- Support configuration screen integration. Device screen can be integrated into various personalized scenes
- Support access to third-party IoT platforms such as Alibaba Cloud, Amazon, Google, etc.
- Innovative A/B Key security mechanism, multi-unit networking, database, multi-screen interaction, Cloud camera remote monitoring etc.
- No need to develop the remote control interface twice, all projects are developed at one time, what you see is what you get. The display screen can be directly monitored through the mobile phone/PC terminal instead of the HMI screen, and the control is flexible and convenient.
- Support MQTT protocol. It can be connected to database server/ERP/MES and other systems to easily realize data collection and reporting. Support millions of terminal concurrent networks.
- Support HTCloud Designer . Built-in Cloud engine, integrated Cloud service. Supports Cloud and mobile accessing control.
- Supports multiple third party protocols. Built-in a variety of industrial equipment drivers, support the current mainstream PLC, inverter, instruments.

Use local mobile or iPad as monitor screen, achieve local operations.



Config



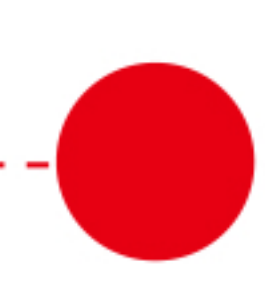
AB Key



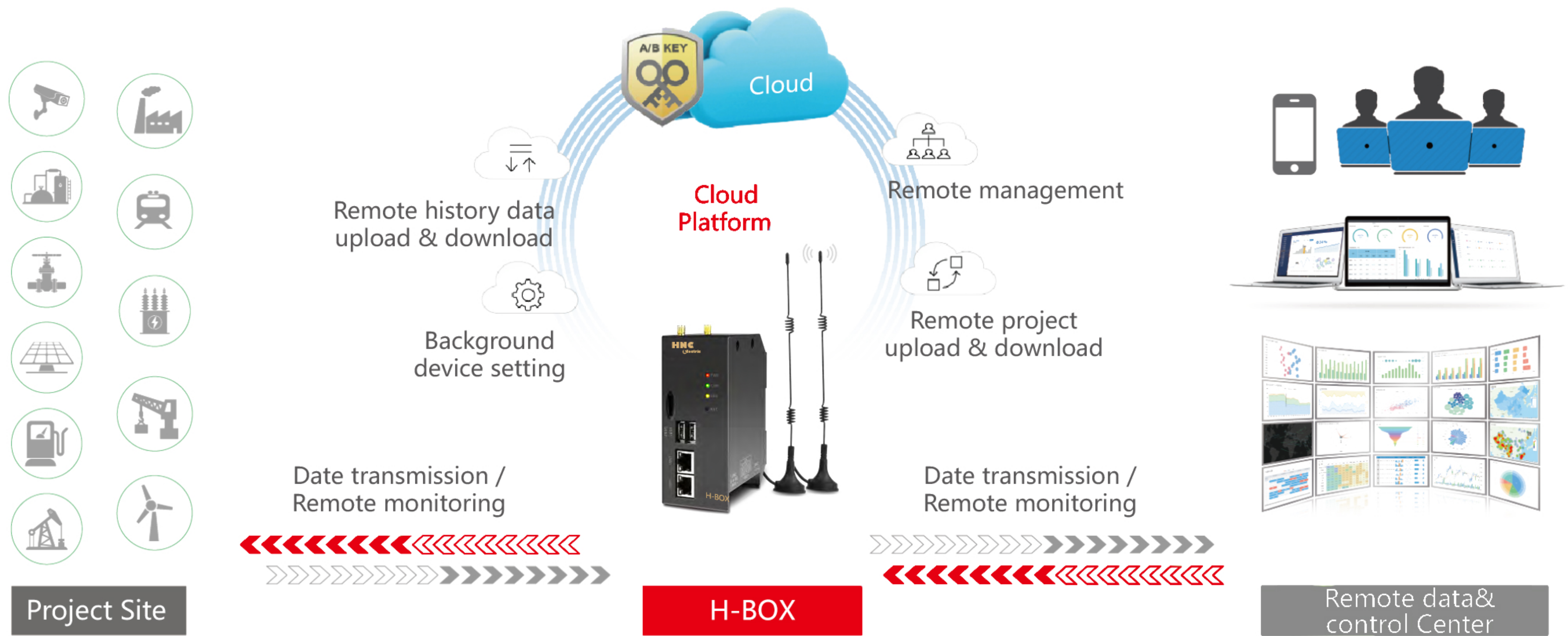
Remote Monitoring



Realtime alarm



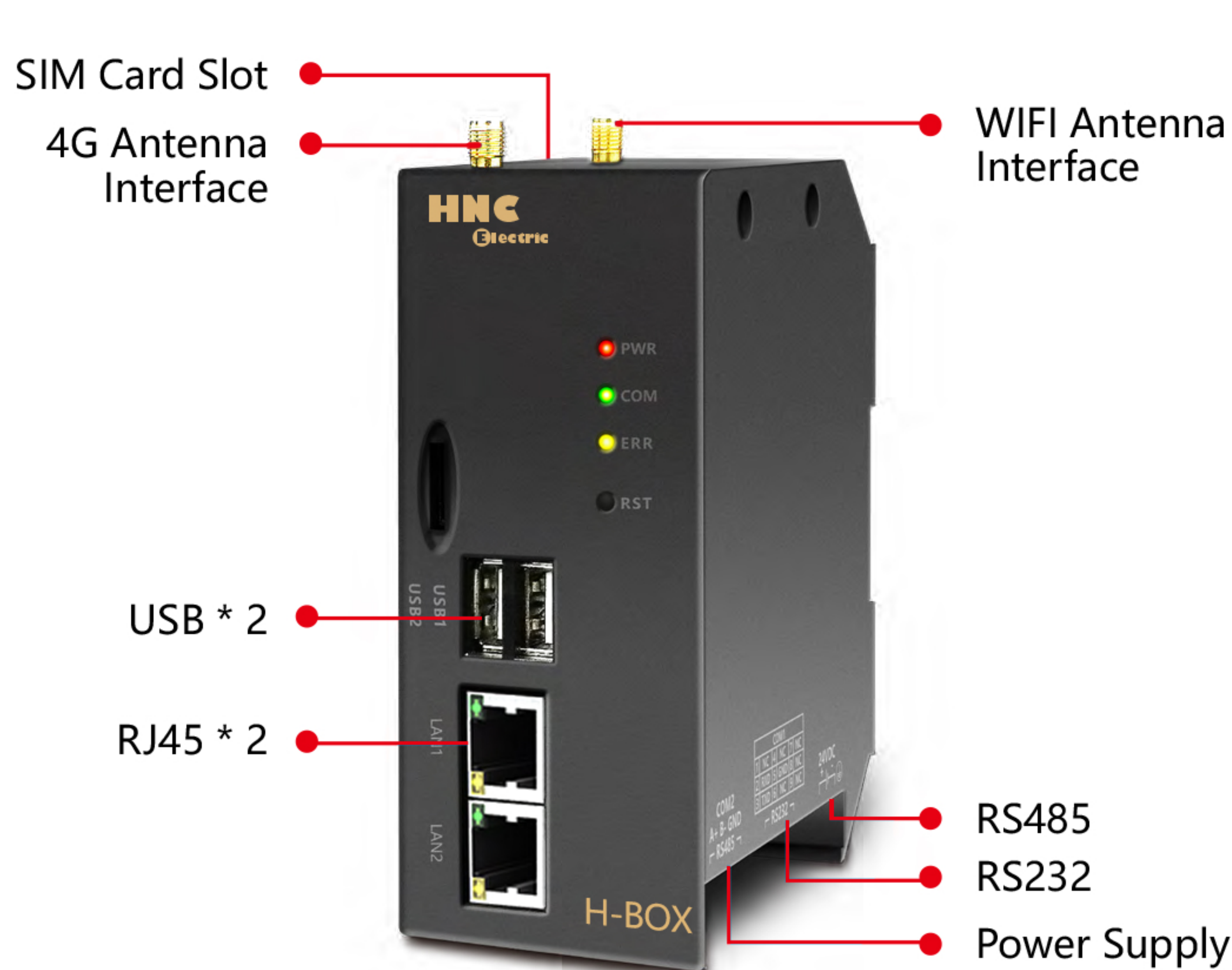
Architecture Diagram



Advantage

- API** Built-in Web API function, can control and obtain the device data through HTTP protocol.
- Support configuration screen integration.** Device screen can be integrated into various personalized scenes
- Built-in MQTT server,** can enable proxy function and easily implement MQTT networking.
- Remote Mobile APP monitoring and management.** A/B Key security
- IoT** Support access to third-party IoT platforms such as Alibaba Cloud, Amazon, Google, etc
- MQTT** Supports MQTT protocol. Easy connect to database as ERP/MES etc
- Supports remote devices centralized monitoring and management**
- Cloud transparent transmission.** Supports remote PLC programming, debugging etc
- No need for users to build MQTT server,** easily achieve remote centralized control of equipment through Haiwell Cloud data center

Interface Description



- 4G Networking**
In the case of outdoor work such as mining, or limited networking conditions, 4G networking will be very helpful.
- Fearless from the wind and the sun**
Strong housing protection design, even in harsh outdoor environments, no need to worry about hardware damage caused by exposed to the sun.
- Inside or outside cabinet installation**
No additional cabinet protection required, can be installed inside or outside the cabinet, saving costs.

Product



H-BOX-M Series

Model List

Model	Storage	I/O	LAN	COM	WIFI	Wireless Network	Dimension(mm) w×h×d
H-BOX-M	4G + 512M	8 DI	1	1	Yes		40×95×65
H-BOX-M-E	4G + 512M	8 DI	1	1	Yes	Global 4G	
H-BOX-M pro	4G + 512M	8 DI/DO, User-defined	1	1	Yes		40×95×65
H-BOX-M-E pro	4G + 512M	8 DI/DO, User-defined	1	1	Yes	Global 4G	

- Built-in 8 digital points. User can customize DI/DO. Design for flexible application is more and cost-effective.
- Built-in Web API function, can control and obtain the device data through HTTP protocol.
- Support configuration screen integration. Device screen can be integrated into various personalized scenes.
- Support access to third-party IoT platforms such as Alibaba Cloud, Amazon, Google, etc.
- Integrated HMI+RTU+IoT Gateway functions all in one. Supports accessing through mobile APP/PC etc.
- Management by HTCloud Designer. Built-in Cloud engine, integrated Cloud service
- Support base station positioning, IP positioning, device map viewing. Real-time device status can be viewed through mobile APP or large monitor screen.

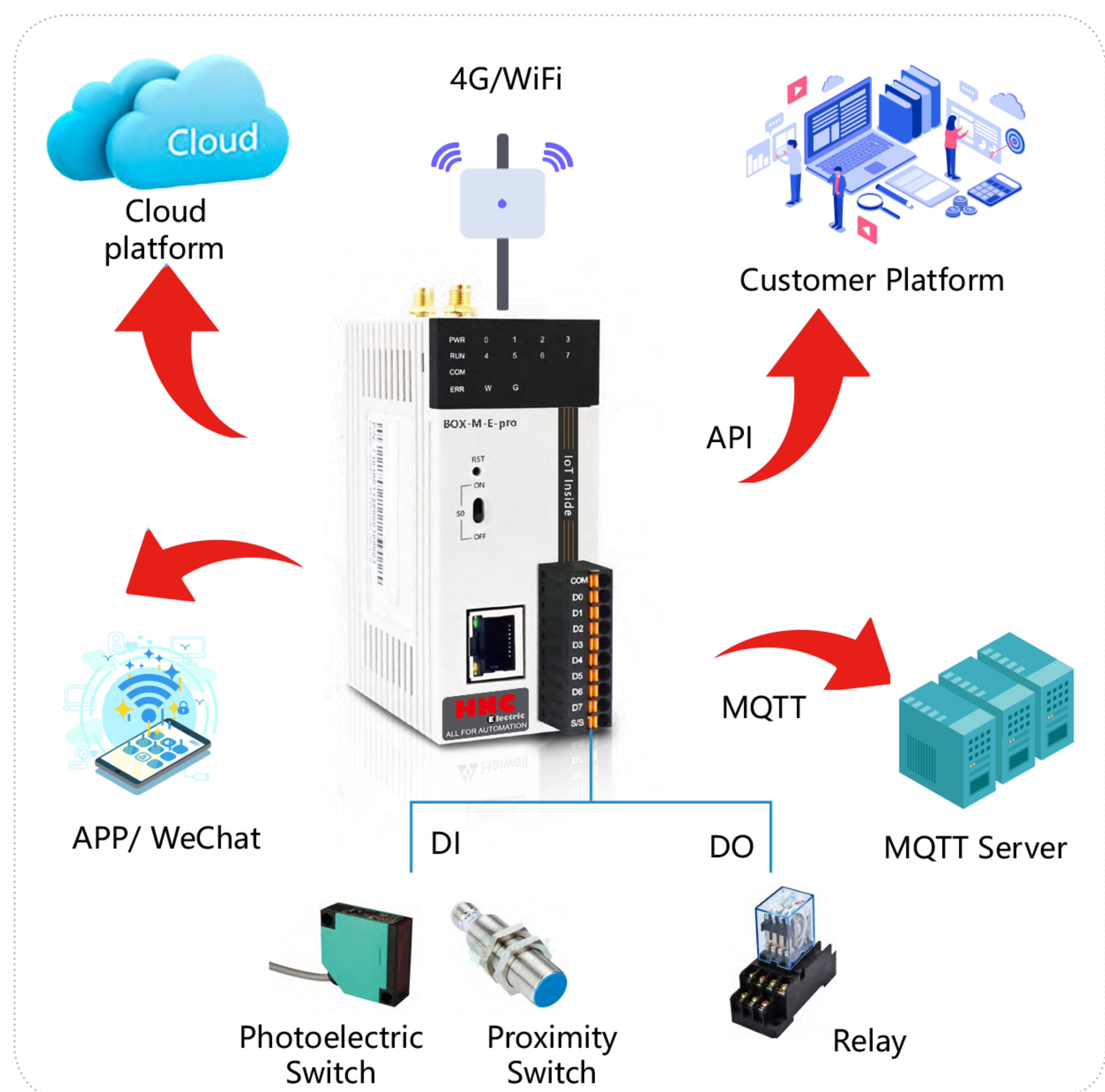
Application

More than having serial port / Ethernet communication, and HMI+PLC mode, the H-BOX-M comes with configurable IO points, realize real-time data collection and transmission.

H-BOX-M can connect to IoT Cloud platform through WiFi/Ethernet/4G multiple ways to push data to the Cloud server, and realize remote configuration, diagnosis and management through the platform.

By IoTBus App, you can remotely monitor it, view historical data, and receive alarm information.

H-BOX-M supports data query by connecting to the customer's self-developed platform through the API interface. Support connect to MQTT server to realize data transmission and storage.



Features



Built-in IO points, integrated RTU functions

Built-in 8 digital points. User can customize DI/DO. More flexible for applications.



Web API Interface

Third-party software and platforms can easily and securely obtain device data and control devices through the built-in Web API function using HTTP protocol, support real-time data push, support PHP, Java, C#, C++ languages. Support Internet and LAN network.



Configuration Screen Integration

Innovatively opened the integration function of the device configuration screen to third parties. Device screen can be integrated into a variety of personalized scenarios such as third-party software, websites, APPs. Let third-party applications immediately have the remote control capabilities of the device.



Multiple security protection mechanisms
Higher safety level with A/B Key + local confirmation safety mechanism, ensure the safe and stable operation of equipments.



Equipment manufacturer maintains identity
Exclusive maintenance identities and enterprise platform for equipment manufacturers, convenient for administrator management



Connect to database
Real-time&history data can be stored to MySQL、SQL Server etc. Support data distribution, and cooperate to generate various real-time data reports.



Cloud transparent transmission
Support remote programming, uploading and downloading, firmware upgrade, diagnosis, monitoring and debugging of PLC etc.



Real-time alarm notification
Alarm information can be pushed to designated management personnel by APP, etc.



Remote data interaction
Supports remote device data interaction through MQTT server, and invocation of the remote device data by HTCloud Designer.



MQTT protocol & Built-in MQTT server
Support MQTT protocol. Can be connected to database server/ERP/MES etc. Actively report, supports millions of terminal concurrent networks. Built-in MQTT server.



Supports multiple protocols
Supports for multiple third party protocols. Built-in a variety of industrial equipment drivers



Currently supported IOT platforms. Keep updating...



Using local mobile, iPads and computers as the control interface to realize local operations

Specification

Specification		H-BOX-M	H-BOX-M-E	H-BOX-M pro	H-BOX-M-E pro
Software		HTCloud Designer			
Power	Input power	24VDC±20%			
	Power Consumption	< 5W			
	Power Protection	Surge protection			
	Voltage Resistance	500V AC			
Environment Parameters	Environmental temperature & humidity	Working temperature: 0 ~ + 55 °C , storage temperature: - 25 ~ 70 +°C , humidity: 5 ~ 95% RH, no condensation.			
	Vibration resistance	10~57HZ amplitude 0.075mm, 57HZ 150HZ acceleration 1G, X, Y, Z 10 times in triaxial direction			
	Impact resistance	15G, 11 Ms, X, Y, Z, 6 times in the triaxial direction			
	Insulation impedance	500V DC between AC terminal and GND terminals, 5M Ω or more (all input / output points to ground 500V DC)			
	Using environment	Anti-dust, moisture-proof, corrosion-proof, protection from electric shock and external force impact, etc.			
	Protection Level	The complete machine is subjected to a salt spray test of 48 hours			
	Cooling Type	Natural air Cooling			
Hardware Parameters	Storage	Flash 4G, RAM 512MB			
	COM port	Support 1 isolated communication (RS232/RS485)			
	Ethernet Port	Ethernet port: 1 * 10/ 100 Base-Tx			
	Hardware system reset	Support			
	Switch S0	Single-pole double-throw			
	WIFI	Support			
	4G	/	Global 4G	/	Global 4G
	SIM	/	1 self-elastic Micro SIM card interface	/	1 self-elastic Micro SIM card interface
	IO port	8 way optoelectronic isolation digital point input		8 way optoelectronic isolation digital point input	
	Dimension	40mm*95mm*65mm (W*H*D)			
	Shell material	Engineering plastics ABC PC (flame retardant requirements: 94V0 grade, in line with ROHS requirements.			
	RoHS	Yes			

Product

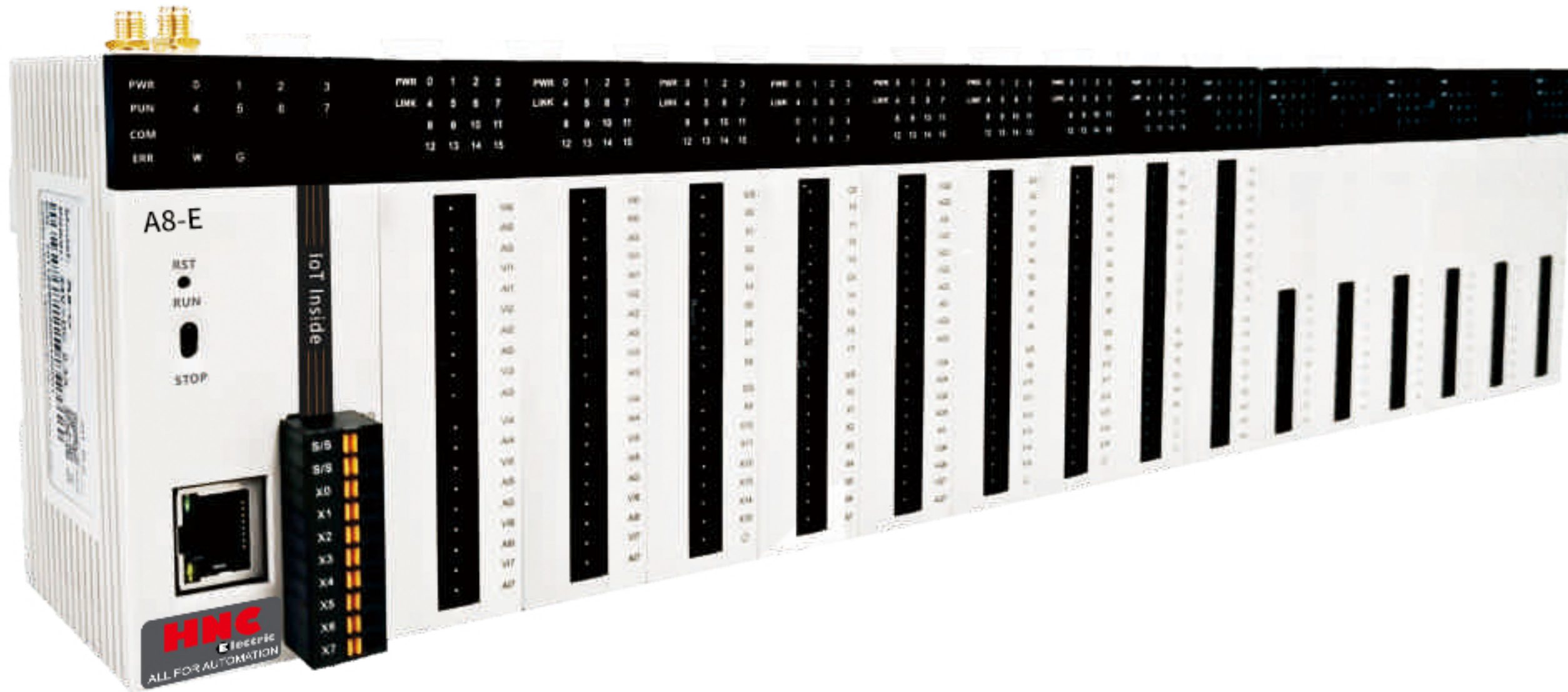


HCC-A8 Series

Model List

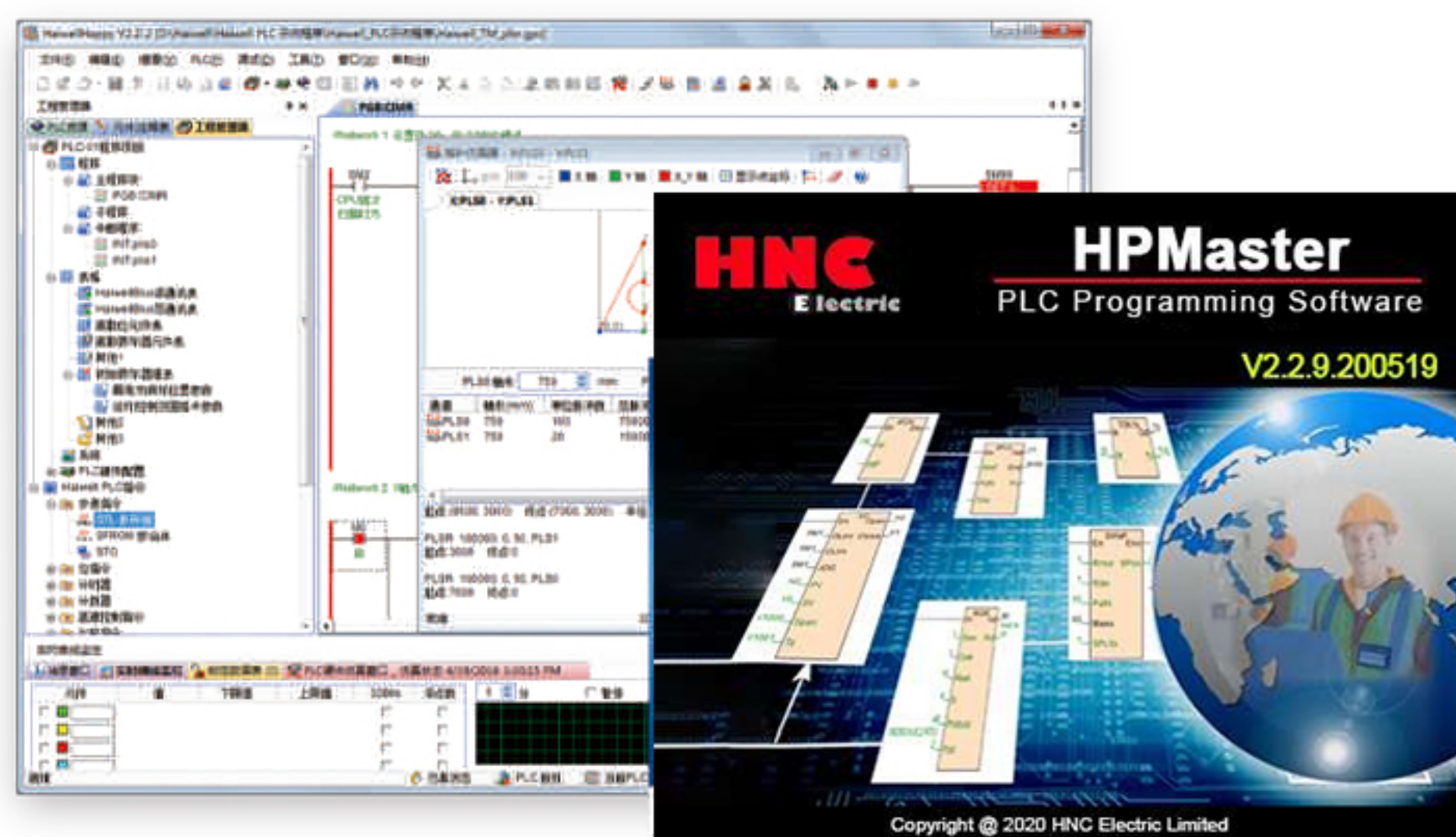
Model	Storage (Flash+RAM)	Max Exp	I/O	LAN	COM	WIFI	Wireless Network	Dimension W×H×D(mm)
HCC-A8	4G+512M	15	8 DI	1	1	Yes		40×95×65
HCC-A8-E	4G+512M	15	8 DI	1	1	Yes	Global 4G	

* series supports Single machine can expand up to 15 modules , A8 does not support expand AE-1C.

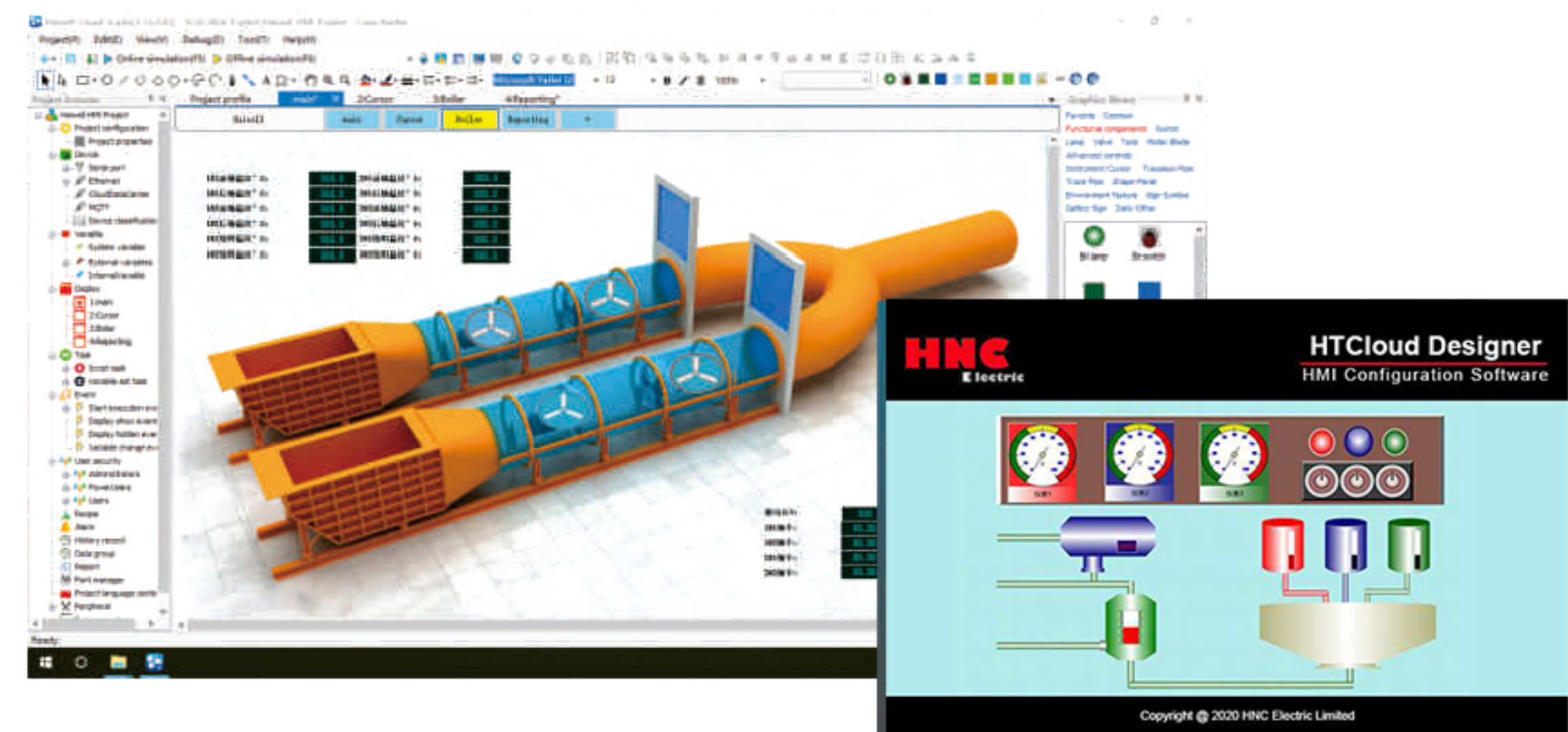


Features

- Multi in 1=PLC+HMI+RTU+IoT Gateway ,Support Cloud and MQTT, Small size, high appearance level, Low cost
- Built-in 8 digital points input, Single machine can expand up to 15 modules, maximum expansion I/O up to 248 points
- Supports all functions of PLC and HMI, Use local mobile or iPad as monitor screen, achieve local operations.
- Strong password protection function, Self-diagnostic function, power failure protection function, calendar (RTC), floating point operations, etc.
- Support access to third-party IoT platforms such as Alibaba Cloud, Amazon, Google, etc.
- Supports for edge calculations. Edge computing through scripting engines built into the terminal,function operations, and interaction with device data
- Using HPMaster PLC programming software and HTCloud Designer for programming and management



HPMaster



HTCloud Designer

Advantage

PLC executable file Generation
 PLC program can be generated to executable file which is released and executed independently. So you do not need to send the PLC program to the user, it can be very easy, very safe to put the PLC executable file to the user to download, but do not worry the user would can see the program content.

Support MQTT protocol
 Supports MQTT protocol, can be connected to database server/ERP/MES etc. Actively report, support millions of terminal concurrent network, can easily surpass and replace DTU equipment.

realize local operations
 Local mobile, iPads and computers can be used as the control interface to realize local operations.

Web API Interface
 Third-party software and platforms can easily and securely obtain device data and control devices through the built-in Web API function using HTTP protocol, support real-time data push, support PHP, Java, C#, C++ languages. Support Internet and LAN network.

Strong password protection function
 Three levels of password protection function (program files password, each block password, PLC hardware password) and prohibits the application to upload.

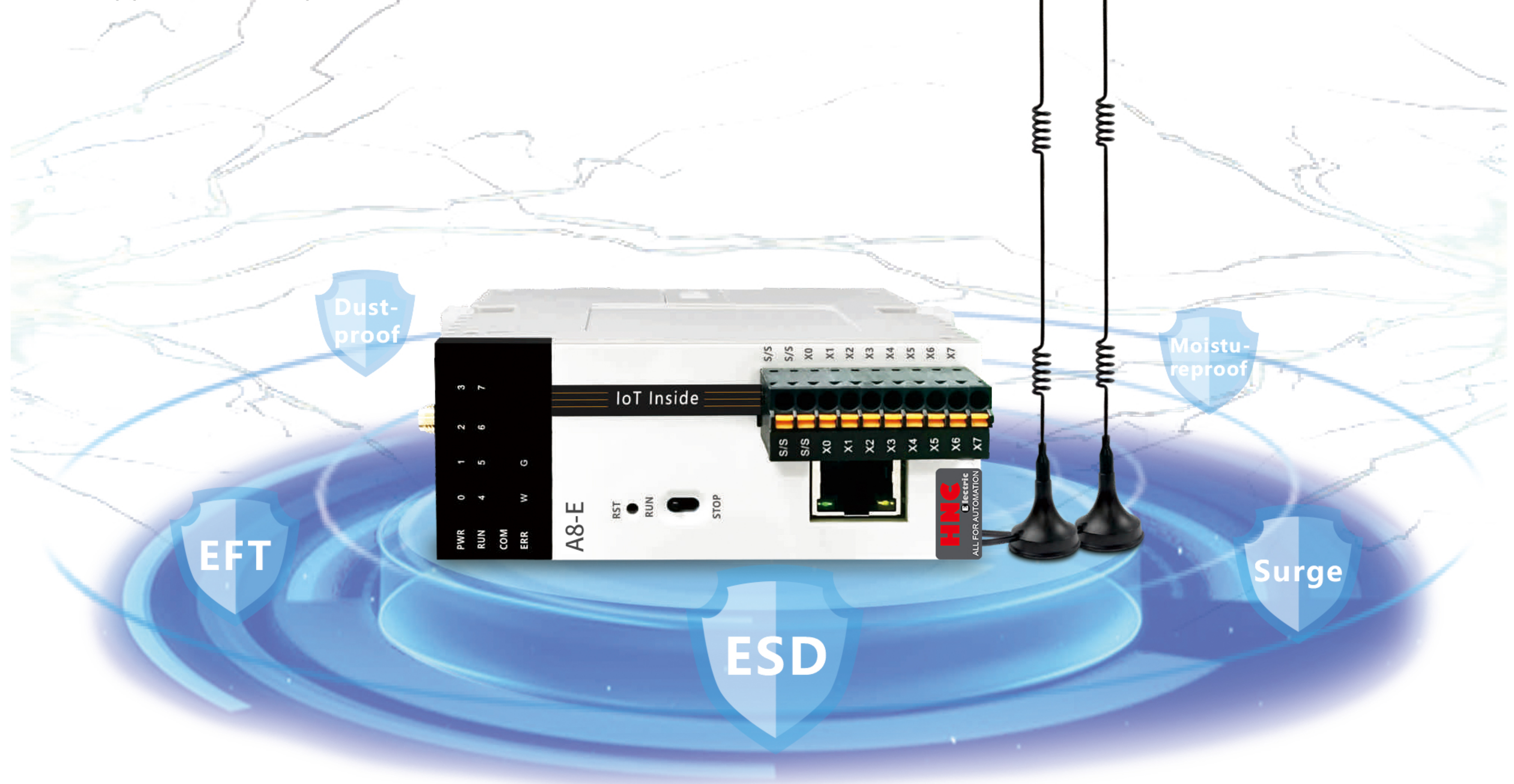
Configuration Screen Integration
 Innovatively opened the integration function of the device configuration screen to third parties. Device screen can be integrated into a variety of personalized scenarios such as third-party software, websites, APPs. Let third party applications immediately have the remote control capabilities of the device.

Radical innovation
 Built-in simulator programming software, supports interpolation simulation, communication simulation, easy study, easy use. Greatly reduce the field debugging time, reduce debugging.

Remote data interaction
 Supports remote device data interaction through MQTT server, and invocation of the remote device data by HTCloud Designer.

Private Deployment
 Support deploy a user-specific Cloud platform on user's own server, without requires of third-party IoT platform providers. Unlimited number of access devices. User can have company's own domain name and logo on the cloud platform, and have an own APP etc.

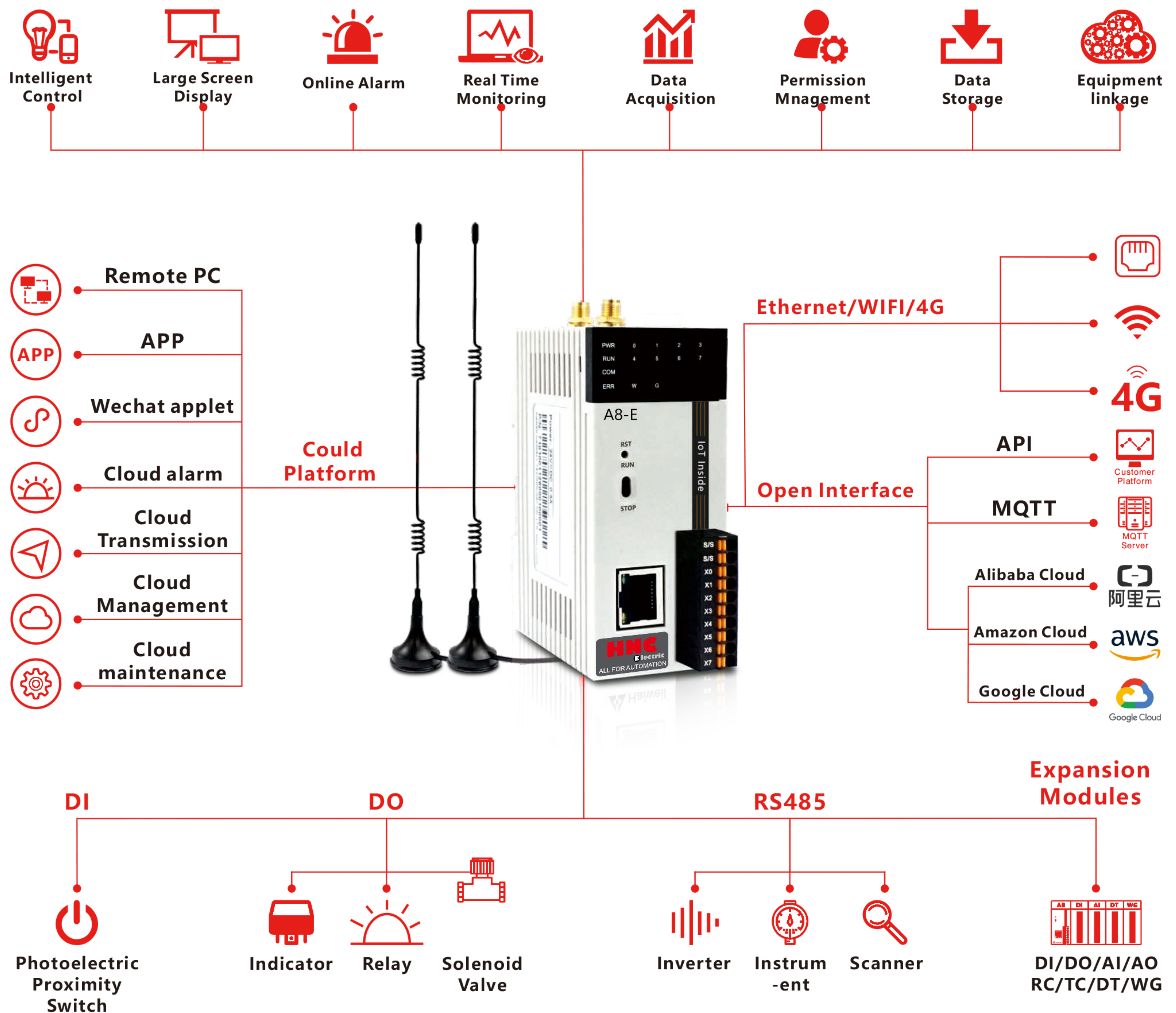
Powerful analog processing function
 No need of programming, we can read AI/AQ engineering value directly.



PLC+HMI without screen all-in-one machine

HCC-A8 series IoT PLC is a small size, compact Internet of things PLC, as a high cost performance product launched by HNC. A8 integrated PLC, HMI, IoT gateway, multi-functional RTU, data transmission DTU functions as one, without any external IoT module. PLC, BOX integration design, small volume, increasing space utilization, greatly simplifying the site wiring construction and reducing the cost of operation and maintenance. One device easily realizes the remote operation and maintenance of PLC, data acquisition, edge calculation and analysis, so that the engineer saves time, effort and worry.

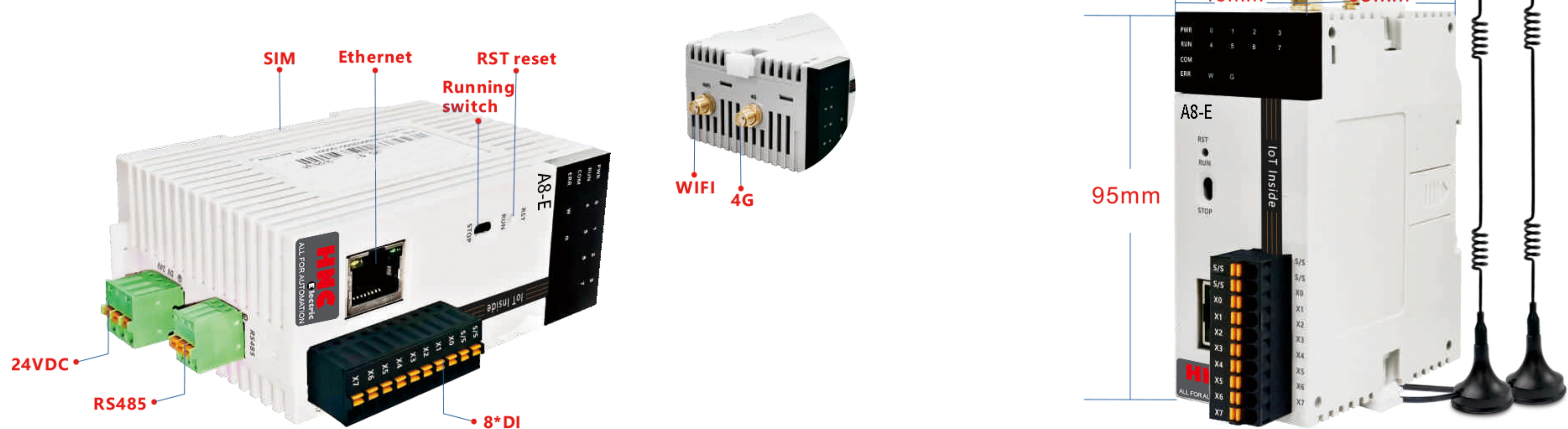
HCC-A8 supports all functions of PLC and HMI. At the same time, it can also expand 15 A series PLC modules, through HPMaster PLC programming software and HTCloud Designer for programming management. It can connect to the Internet of Things (IoT) Cloud platform through WiFi/ 4G/ Ethernet, and connect to Alibaba Cloud, Amazon cloud and other mainstream IoT platforms through MQTT protocol, so that can fully tap the IoT capability of equipment, and help enterprises realize the leap from traditional factory Information to cloud remote information. The more efficient monitoring and management of devices, and the scheduling of the production resource, greatly improve the operational efficiency of industrial applications. It is a big step forward to intelligent manufacturing.



Specification

Specification		HCC-A8	HCC-A8-E
Software	Programming software	HPMaster, HTCould Designer	
PLC	Program control model	Cycle scan model	
	Input/output (I/O) control model	Refresh once each cycle scan, support immediately refresh instruction (MPU and expansion module)	
	Execution speed of instruction	0.05μs/basic instruction	
	Program language	LD (ladder) + FBD (function block) + IL (instruction list)	
	Program apacity	48K	
	Storage way	Flash ROM permanent storage, dispense with backup battery	
	Maximum expansion	15	
I/O port	Storage	Flash 4GB, RAM 512MB	
	COM port	Support 1 isolated communication (RS485)	
	Ethernet Port	Ethernet port: 1 * 10/ 100 Base-Tx	
	Hardware system reset	Support	
	Switch S0	Single-pole double-throw	
	WIFI	Support	
	4G	No	Global 4G
	SIM	No	1 self-elastic Micro SIM card interface
Power	IO port	8 way optoelectronic isolation digital point input	
	Input power	24VDC±20%	
	Power Consumption	<8W	
	Power Protection	Surge protection	
Enviroment	Voltage Resistance	500V AC	
	Environmental Temperature & humidity	Working temperature: -10 ~ +60 °C , storage temperature: - 20 ~ 70 +°C , Humidity: 10 ~ 90% RH, no condensation	
	Vibration resistance	10~57HZ amplitude 0.075mm, 57HZ 150HZ acceleration 1G, X, Y, Z 10 times in triaxial direction	
	Impact resistance	15G, 11 Ms, X, Y, Z, 6 times in the triaxial direction	
	Insulation impedance	500V DC between AC terminal and GND terminals, 5M Ω or more (all input / output points to ground 500V DC)	
	Protection Level	The complete machine is subjected to a salt spray test of 48 hours	
Structure	Cooling Type	Natural air Cooling	
	Dimension	40mm*95mm*65mm (W*H*D)	
	Shell material	Engineering plastics ABC PC (flame retardant requirements:94V0 grade, in line with ROHS requirements)	

Dimensional interface description





HNC
Electric



Thanks for choosing HNC product
Any technique support, please feel to contact our support team

URL: www.hncelectric.com
Email: support@hncelectric.com